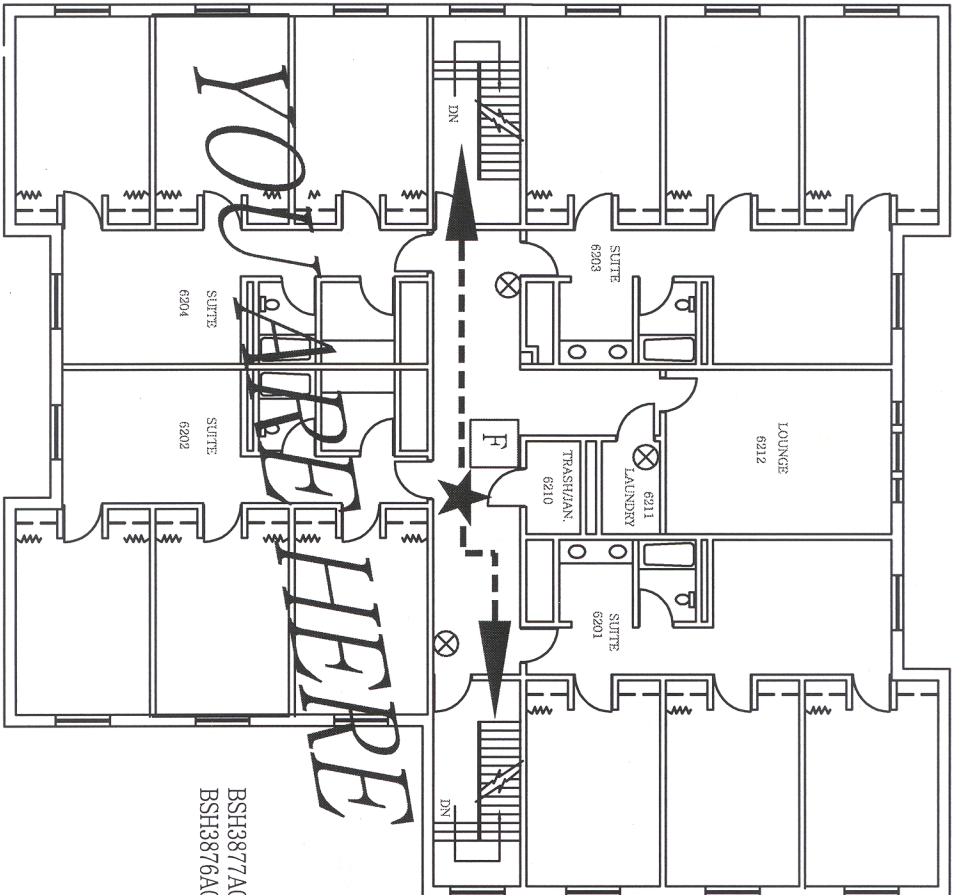


FIRE SAFETY PLAN

FIRE SAFETY IS AN IMPORTANT PART OF OUR DAILY ROUTINE. DURING AN EMERGENCY, PROPER ACTION SAVES LIVES. FOR YOUR SAFETY, PLEASE FAMILIARIZE YOURSELF WITH THESE BASIC STEPS.

1. IF YOU DISCOVER A FIRE OR SMELL SMOKE, SOUND THE BUILDING ALARM. KNOW THE LOCATIONS OF THE ALARM STATIONS AND HOW THEY OPERATE.
2. WHEN THE FIRST ALARM SOUNDS, LEAVE AT ONCE. CLOSE DOORS BEHIND YOU. USE THE NEAREST SAFE EXIT, BUT DO NOT USE ELEVATORS.
3. LEAVE THE BUILDING AND ASSEMBLE IN AN AREA WHERE YOU WILL NOT HINDER THE APPROACHING FIREFIGHTERS AND APPARATUS.
4. IF CAUGHT IN SMOKE OR HEAT, STAY LOW WHERE THE AIR IS BETTER.
5. KNOW THE LOCATIONS OF ALL FIRE EXITS FROM YOUR BUILDING.
6. IF YOU ARE UNABLE TO LEAVE YOUR ROOM OR OFFICE DUE TO HEAT OR SMOKE IN THE HALLWAY OR DUE TO PHYSICAL DISABILITY, TELEPHONE UNIVERSITY POLICE AND GIVE YOUR EXACT LOCATION SO FIREFIGHTERS CAN BE DIRECTED TO YOU.
7. POLICE - FIRE - AMBULANCE PHONE NO. 9-1-1

LEGEND



BSH3877A0214  
BSH3876A0215

McCORMICK RESIDENCE HALL  
BUILDING #3877 HI RISE  
BUSCH CAMPUS  
SECOND FLOOR PLAN

DRAWN BY: TCS  
CHECKED BY: G.R.  
PROJ #:  
DATE: 10-12-00  
DWG. # SK-14

THE STATE UNIVERSITY OF NEW JERSEY  
**RUTGERS**  
OFFICE OF FACILITIES DESIGN  
PISCATAWAY, NEW JERSEY

SK-14